



# BILL OF MATERIALS

## MAS 90®

for:

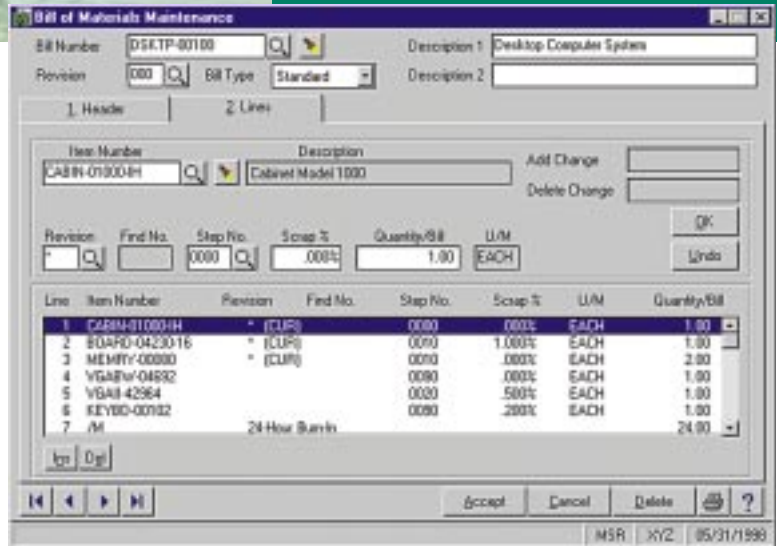
Windows®

Client/Server for Windows NT®

Client/Server for UNIX® Systems

### REPORTS

- Picking Sheet
- Production Entry Register
- Production Labels
- Disassembly Entry Register
- Cost Roll-up Register
- Daily Transaction Register
- Single-level Bill of Materials Report
- Indented Bill of Materials Report
- Summarized Bill of Materials Report
- Single-level Where-used Report
- Indented Where-used Report
- Summarized Where-used Report
- Component Requirement Report
- Gross Requirements Report
- Costed Bill of Materials Report
- Bill Validation Report
- Production History Report
- Engineering Change History Report
- General Ledger Posting Recap
- Engineering Change Register
- Replace/Delete Component Register



The MAS 90 Bill of Materials module allows you to easily create and maintain a detailed bill of the components and miscellaneous charges that make up your finished items and subassembly components. You can produce accurate and informative reports detailing bill structures, component requirements and production history.

The Bill of Materials module is designed to accommodate the after-the-fact recording of production. As the production of each finished product is recorded, the component items used are automatically relieved from inventory, and the finished products are automatically received into inventory. Disassembly of finished items can also be recorded. During Disassembly Entry and Production Entry, components may be added, deleted or modified.

Products sold in a variety of configurations are accommodated by a unique Bill Options feature. Using this feature, components to be added to or subtracted from the base bill may be specified for each option. When the MAS 90 Sales Order Processing module is integrated, you can select Bill Options during Sales Order Entry and Invoice Data Entry.

Engineering Change Control and unlimited revision capabilities are key features of the MAS 90 Bill of Materials module. The Engineering Change Control feature facilitates the recording of bill structure changes, which improves product quality and production efficiency. A detailed record of engineering changes and bill revisions may be retained indefinitely, providing a complete history of the evolution of your products.

See reverse side for list of features



## FEATURES

Bill Revisions	Different versions of a bill can be maintained simultaneously. This feature is useful if you change the configuration of your product but still need to refer to the old configurations.
Bill Options	Bills with multiple configurations can be created. Up to nine categories of options can be defined for each bill. Each Option Category can have an unlimited number of valid choices.
Up to 99 levels	One bill can contain up to 99 levels. You can obtain a comprehensive overview of the entire bill structure from the Indented Bill of Materials Report.
Phantom bills	Components grouped together for manufacturing purposes but never built for stock can be defined as a phantom bill. You can print reports with phantom bills, or you can blow through phantom bills by printing only their components.
Sales Kit Processing	Sales Kits are single-level assemblies not normally stocked together but grouped as a unit when a sale is made. Kit components can be added or deleted during Sales Order Entry. At your preference, component detail can be printed on Sales Orders and picking sheets.
Yield and Scrap Accommodation	Built-in yield and scrap accommodation provides accurate forecasting of material requirements, as well as final output. Both yield and scrap calculations can be used within a single bill.
Production Entry	Manufactured products can be recorded into inventory and component materials relieved using this program. During the entry process, bills are automatically exploded into component detail lines. You can add, delete or change component items and override standard quantities and warehouse for each component. Miscellaneous Charges and comments can also be entered.
Disassembly Entry	Disassembly of manufactured products can be recorded into inventory and component materials returned to stock using this program.
Engineering Change Control	Planned changes to the bill structure can be recorded in advance. You can add or delete multiple components from a bill using the Engineering Change Entry process. You can also specify an effective date when printing reports to include engineering changes up to that date.
Miscellaneous Charges	Bills can include non-material charges such as labor and overhead costs. Actual units and costs associated with Miscellaneous Charges can be entered during Production Entry to reflect actual costs incurred.
Cost Roll-up Register	The cost of each bill can be calculated based upon the cost of each component and Miscellaneous Charge, and upon any yield and scrap percentages. The component costs can be calculated using the average, last or standard cost method.
Work Order Integration	When integrated with the Work Order Processing module, bill of material components can be automatically merged into a work order. The Work Order module provides a complete Work in Process Manufacturing System for companies that require more comprehensive control of their manufacturing process.
MRP Module Integration	The Bill of Materials module provides bill detail that is used by the MAS 90 Material Requirements Planning (MRP) module. The MRP module provides information to the purchasing and production departments so that they can maintain sufficient amounts of materials on hand at all times.
Bar Code Printing	Production labels and picking sheets can be customized to print two types of bar codes. Bar codes and bar code printers must be predefined using the Bar Code Printer Maintenance in the MAS 90 Inventory Management module.